

# **MECHANICAL SEALS**

**TYPE 120**

**LIDERING**

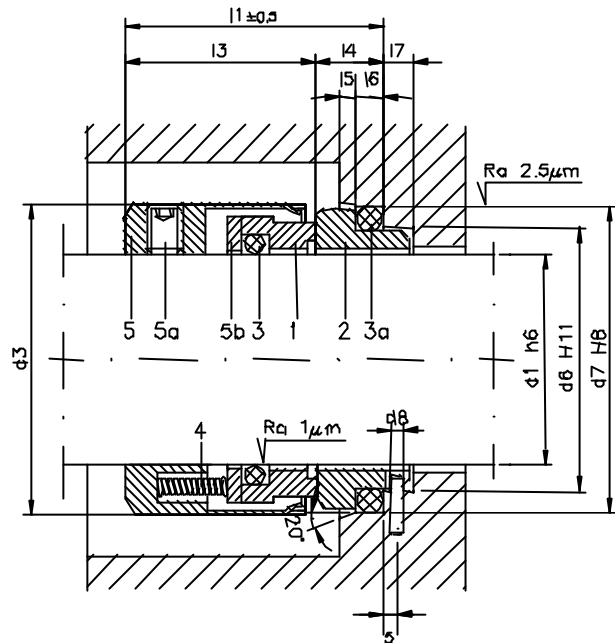
### OPERATING LIMITS

$d_1$	= 14 ÷ 100 mm
$p$	= 10 Kg/cm <sup>2</sup>
$v$	= 20 m/s
$t$	= -15 ÷ +200°C

The operating limits depend on the PV factor

### COMPONENTS

1	Rotative face
2	Stationary face
3	O-ring
3a	O-ring
4	Spring
5	Metal frame
5a	Set crew
5b	Ring



### REFERENCE

### MATERIALS

120 -- BVPGG	Graphite	Aluminium oxide	NBR	SS AISI 316
120 -- BVVGG	Graphite	Aluminium oxide	FKM	SS AISI 316
120 -- BVEGG	Graphite	Aluminium oxide	EPDM	SS AISI 316
120 -- QQPGG	Silicon carbide	Silicon carbide	NBR	SS AISI 316
120 -- QQVGG	Silicon carbide	Silicon carbide	FKM	SS AISI 316
120 -- QQEGG	Silicon carbide	Silicon carbide	EPDM	SS AISI 316
120 -- QBPGG	Silicon carbide	Graphite	NBR	SS AISI 316
120 -- QBVGG	Silicon carbide	Graphite	FKM	SS AISI 316
120 -- QBEGG	Silicon carbide	Graphite	EPDM	SS AISI 316

Available in other materials

# TYPE 120

Unbalanced mechanical seal, multi-spring, independent on direction of rotation.

**DIMENSIONS TABLE** (Measures in mm. subject to change)

Ref.	d <sub>1</sub>	d <sub>3</sub>	d <sub>6</sub>	d <sub>7</sub>	L <sub>1</sub>	L <sub>3</sub>	L <sub>4</sub>	L <sub>5</sub>	L <sub>6</sub>	L <sub>7</sub>
14	14	24	21	25	35.0	23.0	12.0	1.5	4	8.5
16	16	26	23	27	35.0	23.0	12.0	1.5	4	8.5
18	18	32	27	33	37.5	24.0	13.5	2.0	4	9.0
20	20	34	29	35	37.5	24.0	13.5	2.0	5	9.0
22	22	36	31	37	37.5	24.0	13.5	2.0	5	9.0
24	24	38	33	39	40.0	26.7	13.3	2.0	5	9.0
25	25	39	34	40	40.0	27.0	13.0	2.0	5	9.0
28	28	42	37	43	42.5	30.0	12.5	2.0	5	9.0
30	30	44	39	45	42.5	30.5	12.0	2.0	5	9.0
32	32	46	42	48	42.5	30.5	12.0	2.0	5	9.0
33	33	47	42	48	42.5	30.5	12.0	2.0	5	9.0
35	35	49	44	50	42.5	30.5	12.0	2.0	5	9.0
38	38	54	49	56	45.0	32.0	13.0	2.0	6	9.0
40	40	56	51	58	45.0	32.0	13.0	2.0	6	9.0
43	43	59	54	61	45.0	32.0	13.0	2.0	6	9.0
45	45	61	56	63	45.0	32.0	13.0	2.0	6	9.0
48	48	64	59	66	45.0	32.0	13.0	2.0	6	9.0
50	50	66	62	70	47.5	34.0	13.5	2.5	6	9.0
53	53	69	65	73	47.5	34.0	13.5	2.5	6	9.0
55	55	71	67	75	47.5	34.0	13.5	2.5	6	9.0
58	58	78	70	78	52.5	39.0	13.5	2.5	6	9.0
60	60	80	72	80	52.5	39.0	13.5	2.5	6	9.0
63	63	83	75	83	52.5	39.0	13.5	2.5	6	9.0
65	65	85	77	85	52.5	39.0	13.5	2.5	6	9.0
68	68	88	81	90	52.5	39.0	13.5	2.5	7	9.0
70	70	90	83	92	60.0	45.5	14.5	2.5	7	9.0
75	75	95	88	97	60.0	45.5	14.5	2.5	7	9.0
80	80	104	95	105	60.0	45.0	15.0	3.0	7	9.0
85	85	109	100	110	60.0	45.0	15.0	3.0	7	9.0
90	90	114	105	115	65.0	50.0	15.0	3.0	7	9.0
95	95	119	110	120	65.0	50.0	15.0	3.0	7	9.0
100	100	124	115	125	65.0	50.0	15.0	3.0	7	9.0



**LIDERING**



**LIDERING, S.A.**

Pg. Ferrocarrils Catalans, 106 - 108  
08940 Cornellà de Llobregat BARCELONA  
Domestic Sales: 902 480 440  
International Sales: +34 93 480 44 22  
Fax: 93 480 44 04

Cyesa,11 - 28017 MADRID  
Tel: 902 480 440 Fax: 91 361 40 20

**LIDERING, S.A.R.L.**

Parc des Aqueducs, Lot E  
Chemin du Favier RD 42  
69230 Saint-Genis-Laval FRANCE  
Tél: 04 72 67 02 67 Fax: 04 78 56 04 08

**S.A. CONTINENTAL SEALS NEW N.V.**  
(LIDERING GROUP)

Ch. de Louvain 270 - Leuvensestwg  
1410 Waterloo BELGIQUE-BELGIË  
Tél: 02 357 06 30 Fax: 02 354 29 86

<http://www.lidering.com>