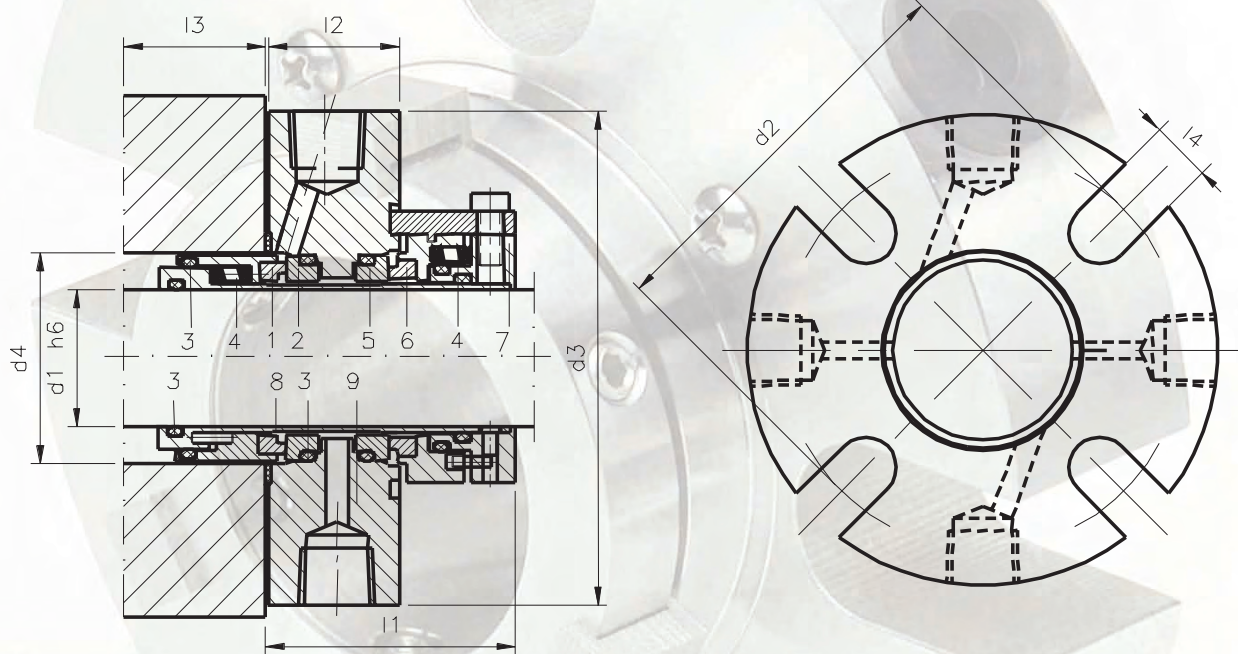


MECHANICAL SEALS

TYPE 212 D

LIDERING



OPERATING LIMITS

$d_1 = 25 \div 125 \text{ mm}$

$p = 25 \text{ Kg/cm}^2$

$v = 20 \text{ m/s}$

$t = -40 \div +200^\circ\text{C}$

The operating limits depend on the PV factor

MATERIALS

QQVGGBQ

QQEGGBQ

QBVGGBQ

QBEGGBQ

COMPONENTS

1 Rotative face product side

2 Stationary face product side

3 O-ring

4 Spring

5 Stationary face air side

6 Rotative face air side

7 Set screw

8 Metal frame

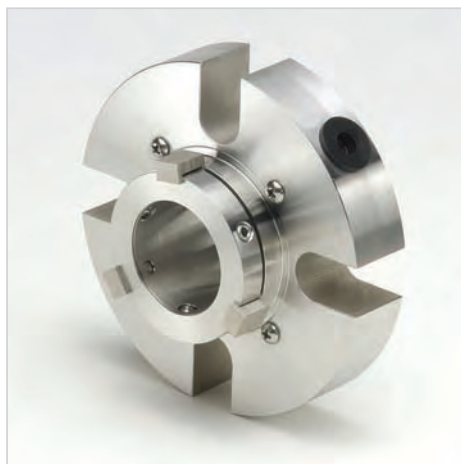
9 Flange

Available in other materials

Mechanical Seals

212 D

Cartridge double seal, balanced,
multi-spring and independent
on direction of rotation.



DIMENSIONS TABLE (Measures in mm. subject to change)

Ref.	d ₁	d ₂ Min.	d ₂ Max.	d ₃	d ₄ Min.	d ₄ Max.	l ₁	l ₂	l ₃	l ₄
25	25	67.0	90.5	104.8	41.0	49.0	52.4	20.0	32.5	12.5
28	28	70.3	93.6	108.0	44.0	52.3	52.4	20.0	32.5	12.5
30	30	73.5	96.8	111.0	46.0	55.5	52.4	20.0	32.5	12.5
32	32	73.5	96.8	111.0	48.0	55.5	52.4	20.0	32.5	12.5
33	33	73.5	96.8	111.0	49.0	55.5	52.4	20.0	32.5	12.5
35	35	76.6	96.8	111.0	51.0	57.5	52.4	20.0	32.5	12.5
38	38	85.7	114.3	127.0	57.2	60.3	54.0	20.0	33.3	12.5
40	40	85.7	114.3	127.0	58.0	60.4	54.0	21.5	33.3	14.7
43	43	95.3	127.0	139.7	61.0	63.5	54.0	21.5	33.3	14.7
45	45	95.3	127.0	139.7	63.5	69.9	54.0	21.5	33.3	14.7
48	48	95.3	127.0	139.7	66.7	73.0	54.0	23.0	33.3	14.7
50	50	104.8	139.7	152.4	68.0	73.0	54.0	23.0	33.3	14.7
53	53	104.8	139.7	152.4	71.0	76.2	54.0	23.0	35.0	17.5
55	55	114.3	149.2	165.1	74.0	79.4	54.0	24.5	35.0	17.5
58	58	114.3	149.2	165.1	76.2	82.5	54.0	24.5	35.0	17.5
60	60	114.3	149.2	165.1	79.4	85.7	54.0	24.5	35.0	17.5
63	63	127.0	160.3	177.8	85.8	92.1	60.3	24.5	38.1	17.5
65	65	127.0	160.3	177.8	88.9	95.3	60.3	24.5	38.1	17.5
68	68	127.0	160.3	177.8	92.1	98.4	60.3	24.5	38.1	17.5
70	70	127.0	160.3	177.8	92.1	98.4	60.3	24.5	38.1	17.5
75	75	142.9	173.0	190.5	98.5	108.0	60.3	24.5	38.1	17.5
80	80	142.9	173.0	190.5	101.6	111.1	60.3	30.5	38.1	17.5
85	85	155.6	182.5	203.2	108.0	117.5	60.3	30.5	38.1	20.5
90	90	171.5	195.2	215.9	114.3	127.0	60.3	30.5	38.1	20.5
95	95	171.5	195.2	215.9	117.5	130.2	60.3	30.5	38.1	20.5
100	100	188.9	207.9	228.6	123.9	139.7	60.3	30.5	38.1	20.5
105	105	188.9	208.0	228.6	130.1	149.2	60.3	30.5	38.1	20.5
110	110	198.4	220.6	241.3	136.5	158.8	60.3	30.5	38.1	20.5
115	115	211.1	230.2	254.0	142.9	168.3	60.3	30.5	38.1	20.5
120	120	211.1	230.2	254.0	142.9	168.3	60.3	30.5	38.1	20.5
125	125	211.1	230.2	254.0	149.2	168.3	60.3	30.5	38.1	20.5

LIDERING



LIDERING, S.A.

Pg. Ferrocarrils Catalans, 106 - 108
08940 Cornellà de Llobregat BARCELONA
Domestic Sales: 902 480 440
International Sales: +34 93 480 44 22
Fax: 93 480 44 04

Pollensa, 2, Ofic. 8
Edif. Artemisa – Tartessos
28290 Las Rozas MADRID
Tel: 902 480 440 Fax: 91 361 40 20

LIDERING, S.A.R.L.

Parc des Aqueducs, Lot E
Chemin du Favier RD 42
69230 Saint-Genis-Laval FRANCE
Tél: 04 72 67 02 67 Fax: 04 78 56 04 08

S.A. LIDERING N.V.

Ch. de Louvain 270 - Leuvensestwg
1410 Waterloo BELGIQUE-BELGIË
Tél: 02 357 06 30 Fax: 02 354 29 86

<http://www.lidering.com>